

# Hollywood Burbank Airport Site 5 Project

Holder-Pankow-TEC



**Pankow**  
**TEC**





# WELCOME

## Opening Comments

# Project Information Session

- Project Overview
- Project Schedule
- DBE & Project Requirements
- Project Website
- Event Set-up











## Project Overview

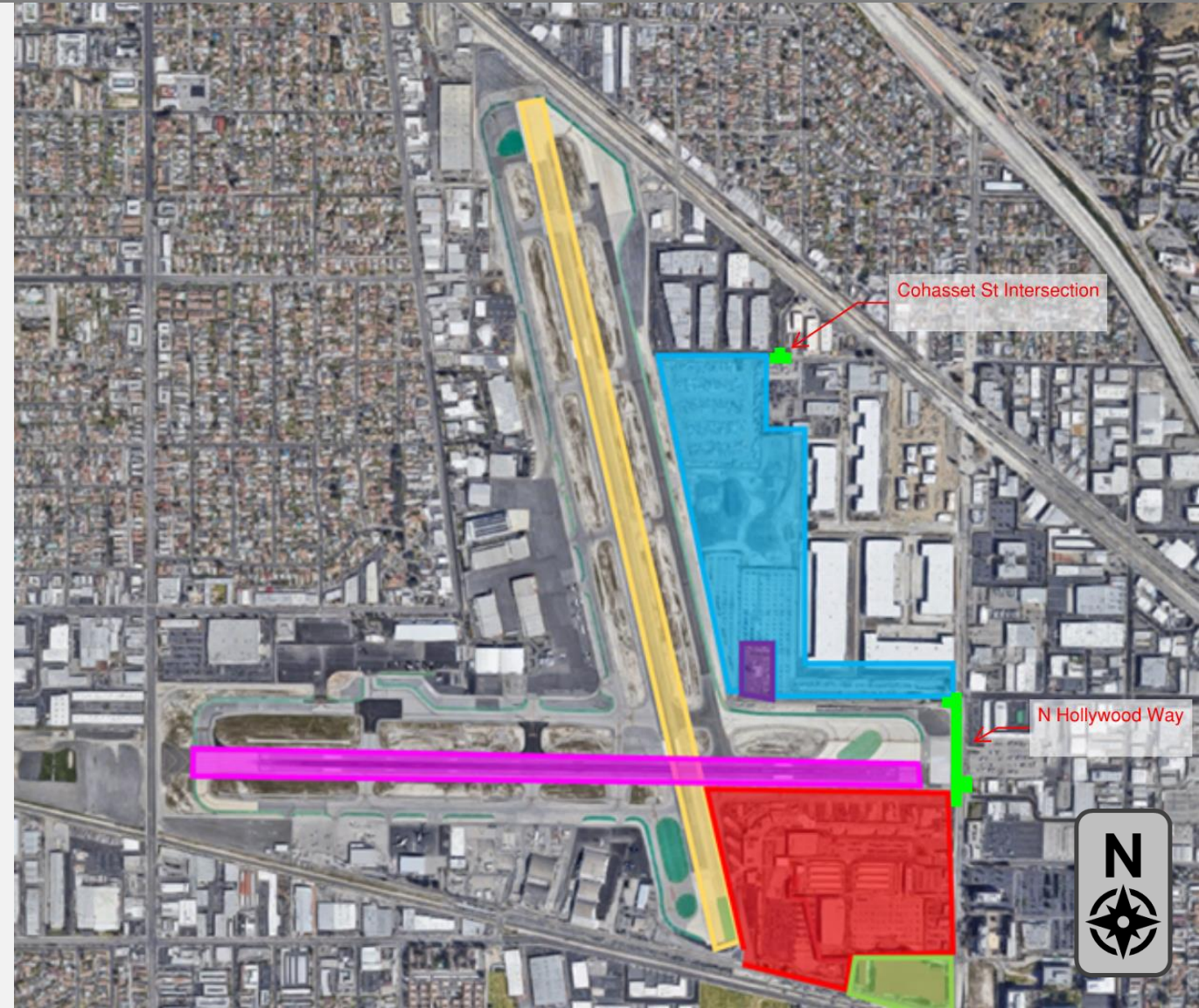


# Progressive Design Build Agreement

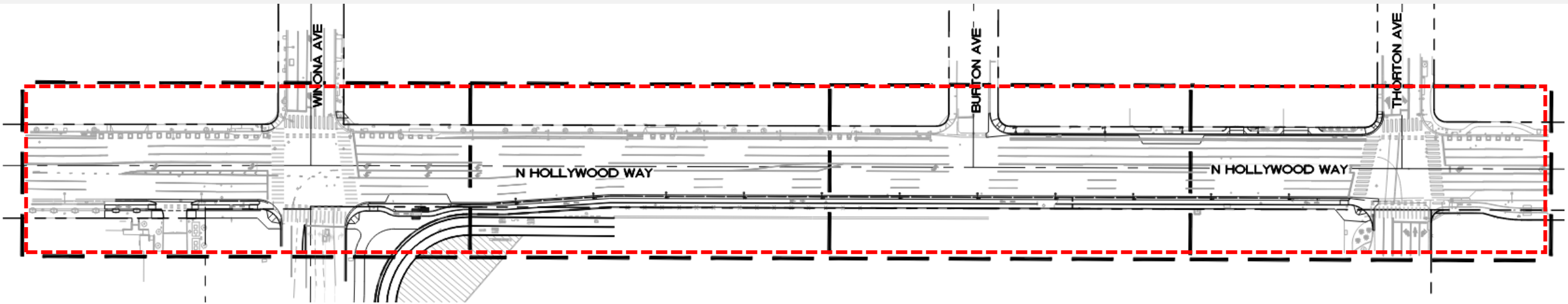


# Project Overview

-  Existing Terminal & Parking
-  Regional Intermodal Transportation Center
-  Air Traffic Control Tower
-  Airplane Takeoff Runway
-  Airplane Landing Runway
-  Project Location



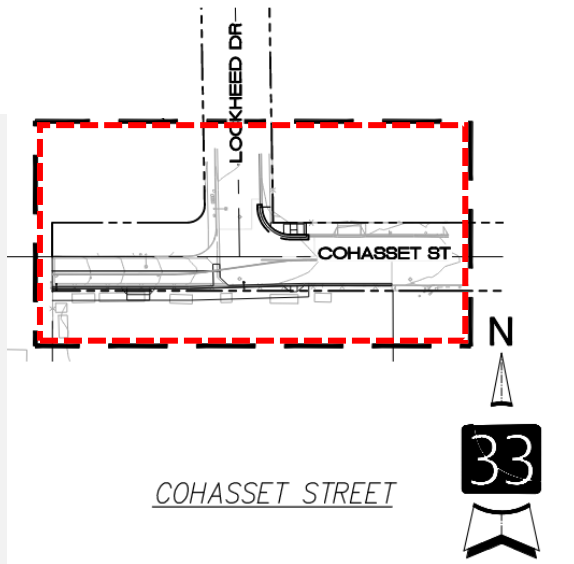
# Project Overview



HOLLYWOOD WAY

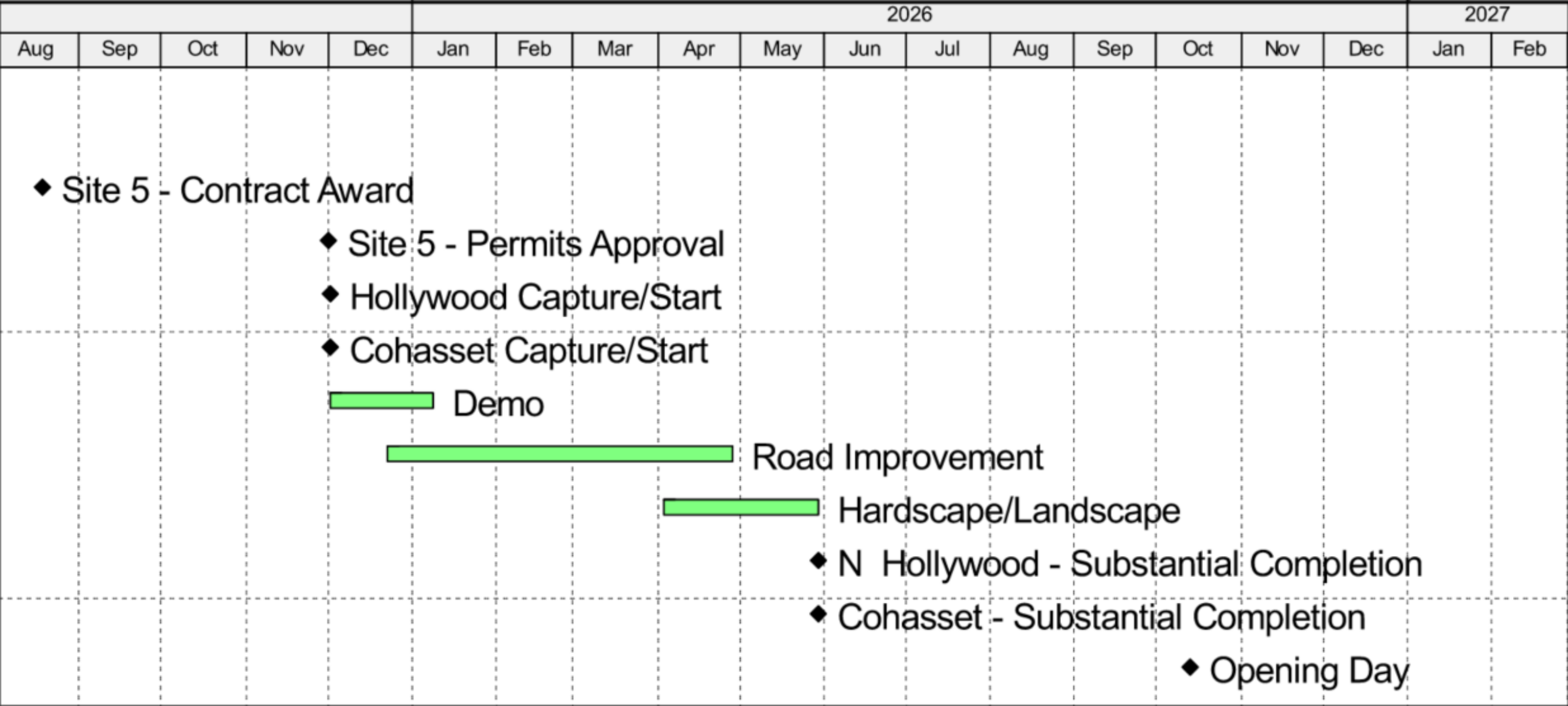


 Project Boundary



COHASSET STREET

# Site 5 - Project Schedule







## Prequalification Requirements

- Company Info
- Points of Contact
- Number of Employees
- Scopes of Work Performed
- Experience Modification Rate (EMR)
- Licenses
- DBE Certification
- Annual Billing
- Project Experience
- Bonding/Insurances







## Current Opportunities

### Site 5 Offsite Improvements

- Demolition
- Paving
- Landscape / Irrigation
- Hardscape
- Fencing
- Traffic Control
- Traffic Signals
- Striping

**Prequalifications Due:  
8/8/2025**

### Demolition

- Structural Demolition
- Abatement

**Prequalifications Due:  
12/1/2025**



## DBE Achievement

## DBE Participation Goal





## DBE Achievement

### Meet or Exceed the DBE Goal – 18%

- 24/7 Project Website for Updates ([www.hptjvteam.com](http://www.hptjvteam.com))
- Numerous Outreach Opportunities
- “Right Sizing” Packages for Prime Opportunities
- Encourage Networking, Mentor/Protégé, & Sub-Prime Opportunities
- Trade Contractors Required to Submit Preliminary & Final DBE Plans

1

#### TARGETED OUTREACH

Create a clear & organized outreach plan

4

#### SUBCONTRACTOR OPPORTUNITIES

Conduct outreach & negotiate with certified firms

2

#### BUSINESS ASSESSMENT

Assess capacity & capability

5

#### MONITORING & COMPLIANCE

Continuous monitoring beyond review at bid time

3

#### BID PACKAGING

Create bid packages to prequalify firms

6

#### REPORTING

Quarterly reports for the period & remaining work





## DBE Achievement

### Certifying DBE Entities

- CALTRANS
- City of Los Angeles
- LA METRO
- BART
- City of Fresno
- JPB
- SFMTA
- SAMTRANS
- VTA

### DBE Certification Information

- Disadvantaged individual must be a U.S. citizen and a member of a socially and economically disadvantaged group
- Personal net-worth (PNW) of less than \$1,320,000
- Average annual gross receipts over previous 3 fiscal years less than \$26,290,000
- Firm must be for-profit small business with DBE owner(s) own at least 51% interest

**Note:** In order to apply for certification as a Disadvantaged Business Enterprise (DBE), your firm must meet the eligibility criteria stated in 49 CFR Part 26.

**More Information can be found at:**

**<https://www.transportation.gov/civil-rights/disadvantaged-business-enterprise/ready-apply>**

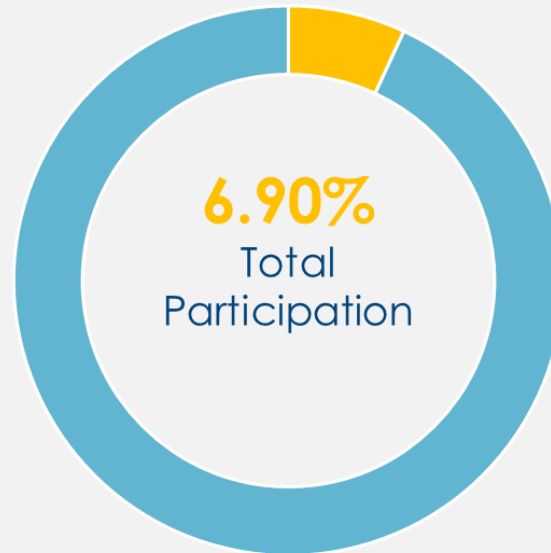
# Project Labor Agreement (PLA) & Federal Requirements

- Meet or Exceed the Workforce Participation Goals
- Sign Letter of Assent and abide by Union Master Labor Agreements
- Tier 1 & Tier 2 Area Resident Zip Code Prioritization

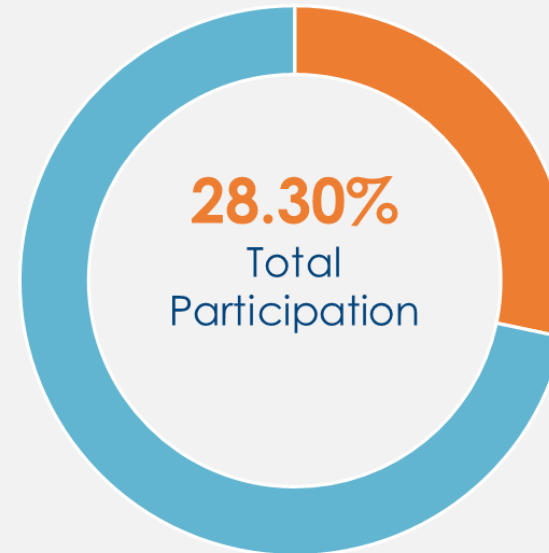


## Workforce Participation Goals

**Female Workforce Participation Goal**



**Minority Workforce Participation Goal**



**Local Workforce Participation Goal**



More Information can be found at:

<https://elevatebur.com/wp-content/uploads/2021/12/PLA-BGPAA.pdf>



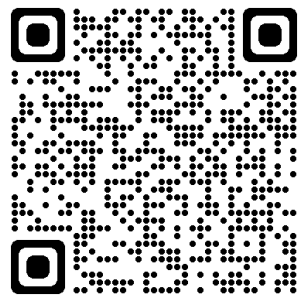
Project  
Website



# HOLLYWOOD BURBANK AIRPORT REPLACEMENT PASSENGER TERMINAL PROJECT

[Home](#) | [About Us](#) | [Outreach](#) | [DBE Program](#) | [PLA](#) | [Prequalification](#) | [Bid Opportunities](#) | [Contact Us](#) | [Airport Links](#)

WELCOME TO HPT'S PROJECT WEBSITE FOR THE  
**HOLLYWOOD BURBANK AIRPORT  
REPLACEMENT PASSENGER TERMINAL PROJECT**



Scan for  
Project  
Website

**[www.hptjvteam.com](http://www.hptjvteam.com)**

- Real-time updates
- Access to Prequalification
- Bid Opportunities
- HPT Contact Information



# Contact Us!



## **General Preconstruction Information**

**Jeanna Heston**

Director Preconstruction  
jheston@holder.com



## **General Preconstruction Information**

**Johanna Mathew**

Senior Design Coordinator  
jmathew@hptjv.com



## **Preconstruction Trade Management**

**Ammon Montgomery**

Engineer  
amontgomery@holder.com

# Thank You

